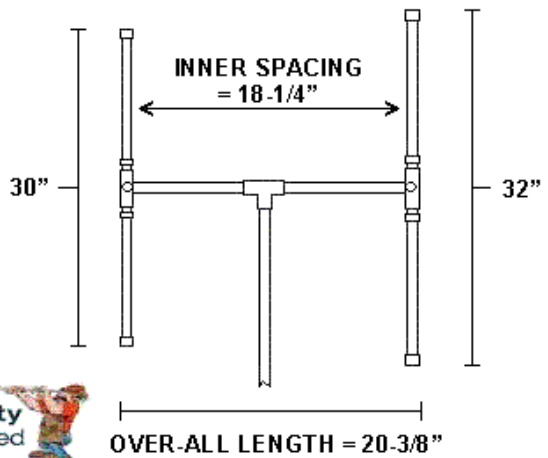
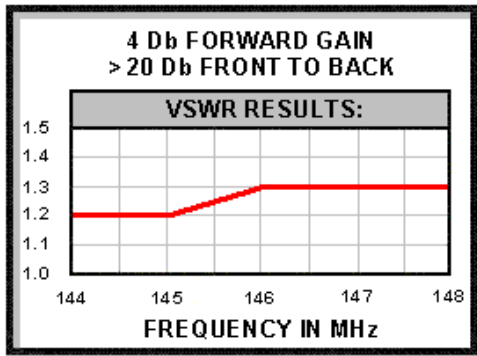
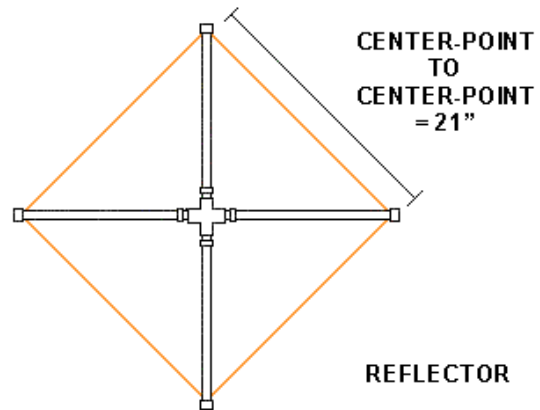
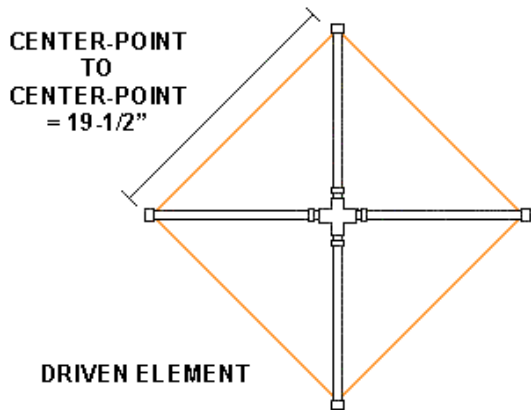
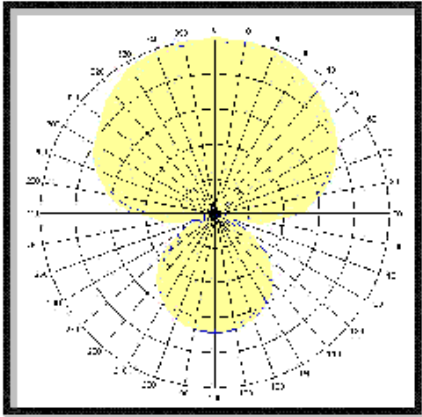
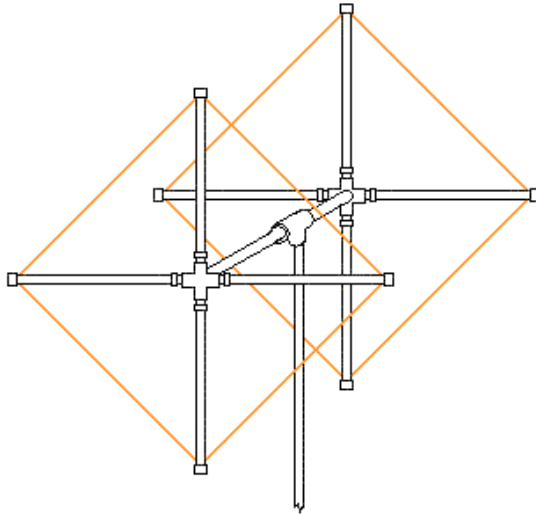
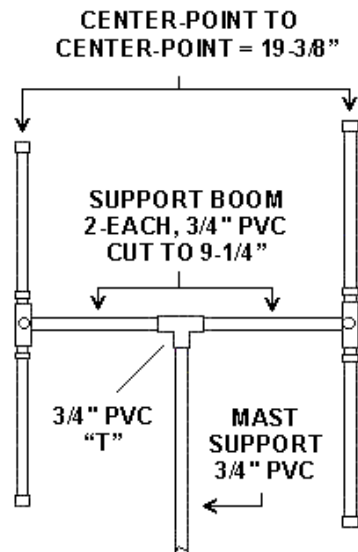
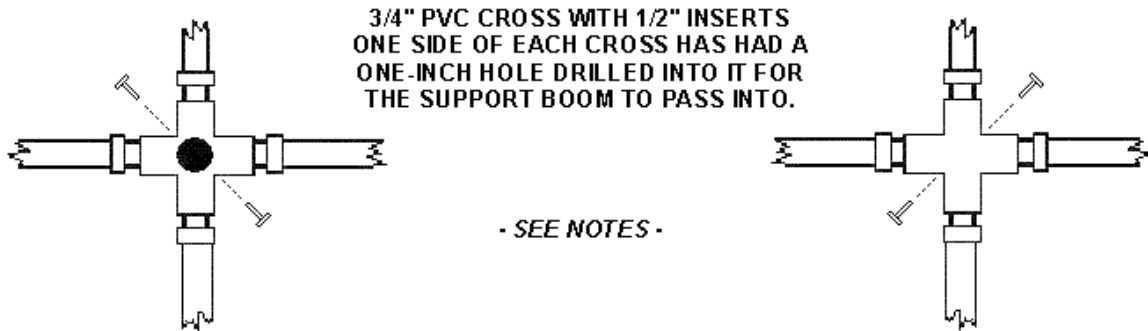
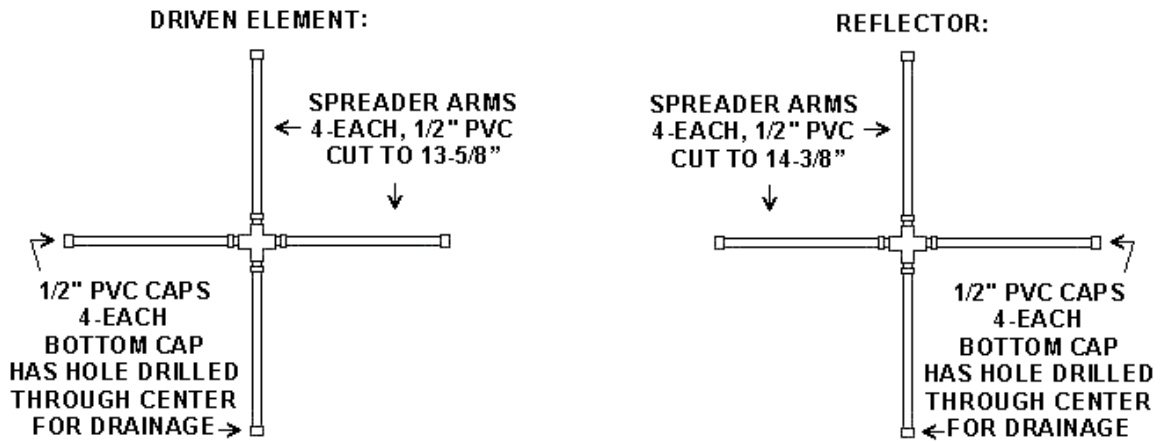


2 Meter Quad

DESIGN BY K6WXA



Page 2 – FRAME ASSEMBLY



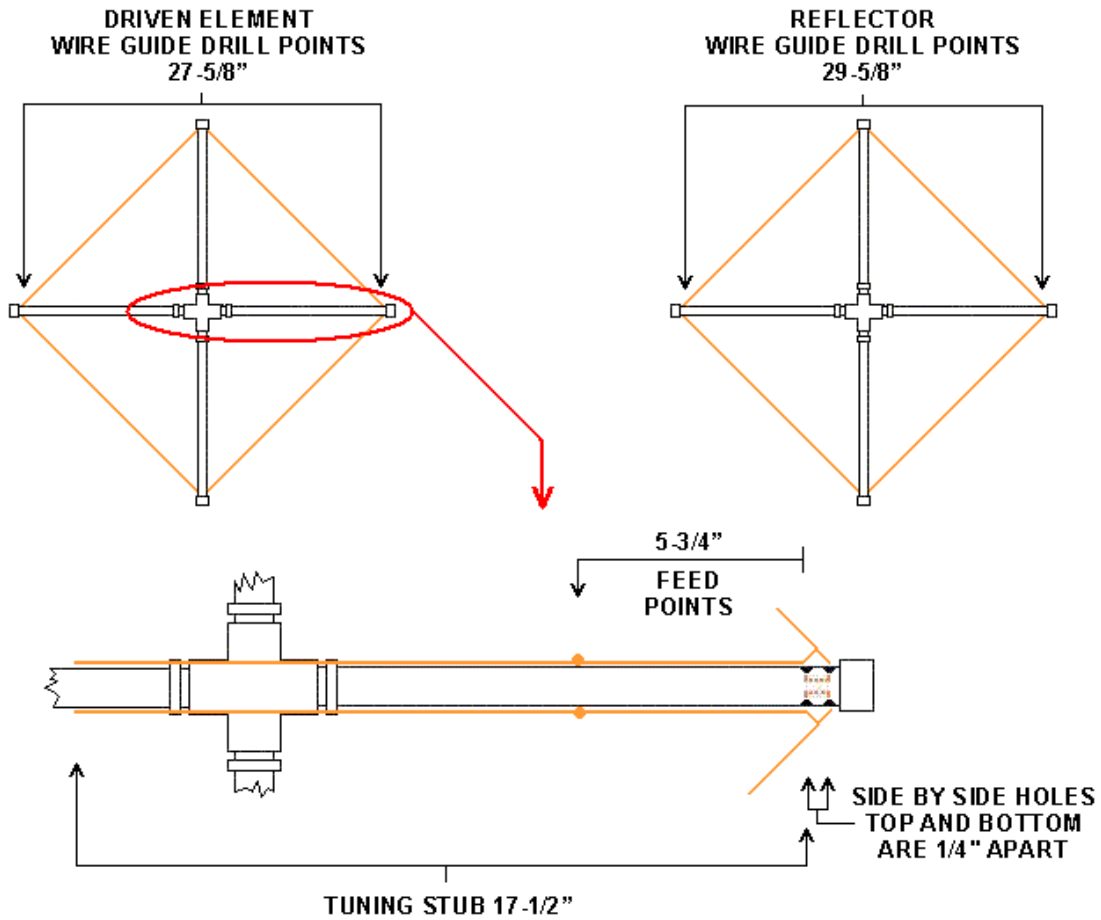
- NOTES -

GLUE THE PVC CAPS ON LAST *AFTER* DRILLING THE WIRE GUIDE HOLES. (*SEE NEXT PAGE*)

AFTER INSERTING THE SUPPORT BOOM ENDS INTO THE PVC CROSSES, USE A PLUM-BOB TO ALIGN AND GLUE IN PLACE. THEN DRILL TWO DIAGONAL HOLES THROUGH THE PVC CROSSES AS SHOWN AND INSERT TWO SCREWS TO SECURE THE ELEMENTS TO THE BOOM.

AFTER CUTTING THE SPREADER ARMS TO THE LENGTHS INDICATED, AND DRILLING THE WIRE GUIDE HOLES, APPROXIMATELY ONE-HALF INCH WILL BE AVAILABLE FOR ATTACHING THE PVC CAPS.

Page 3 – WIRING / FEEDING / TUNING



NOTE: DISTANCE MEASURED IS FROM TIP AT LEFT, TO THE INNER HOLE POINT WHERE THE TWO WIRES OF THE TUNING STUB JOIN TO THE WIRES OF THE DRIVEN ELEMENT.

ENDS OF THE WIRE LOOP OF THE DRIVEN ELEMENT ARE BROUGHT IN THROUGH THE OUTER HOLES, THEN FED BACK OUT THE INNER HOLES, THEN TWISTED TOGETHER AND SOLDERED.

WIRE LOOP ENDS OF THE REFLECTOR ELEMENT JOIN AT ANY CONVENIENT POINT FOR SOLDERING.

WIRE USED FOR THE ELEMENTS AND TUNING STUB IS #14 AWG JACKETED SOLID COPPER WIRE.

USE OF STRANDED WIRE MIGHT RESULT IN LESS KINKS, OR POSSIBLY 1/16" BRASS MUSIC WIRE.

